

Retro- and Upgrade Services

H.VIR COMET® Infrared Inspection Window

Safety and productivity can depend on your point of view



UL-recognized component for NEMA Type 3 and NEMA Type 12 equipment

Simple, permanent installation

Allows non-intrusive infrared inspections with no downtime

Available in 2-, 3- and 4-inch viewing area diameters

1-888-SQUARED

www.SquareD.com
www.SquareD-services.com
www.schneider-electric.com

**Emergency Services Available
24 Hours/Day-7 Days/Week**

The H.VIR COMET window is a patented transparent window which enables permanent access for inspection of electrical components in a safe and simple way without disturbing operations. Specially developed for infrared inspections, the window is made of a glass-like material that is transparent for infrared rays, which are registered by the thermographic camera. The complete unit is permanently fitted into electrical equipment to give continuous access for infrared inspections.

With the H.VIR COMET window installed, infrared inspections can be performed at any time without downtime or danger of electric shock.



Applications

The H.VIR COMET Infrared window can be installed in many types of electrical equipment such as switchboards, switchgear, transformers, motor control centers, generators and junction boxes. It allows wavelength transmission all brands of infrared cameras.

SPECIFICATIONS

	Short Wave 0.35µm to 5.5µm	Long Wave 0.35µm to 12µm
IR Transmission	94%	up to 94% *
Thermal Conductivity	9.71 W/mK @ 36° C	11.72 W/mK @ 13° C
Resistance @ 20° C	7.9 X 10 ¹⁷ ohm	7.9 X 10 ¹⁷ ohm
Resistance @ 150° C	6.7 x 10 ¹¹ ohm	6.7 x 10 ¹¹ ohm
Hardness	Knopp 150	Knopp 82
Porosity	None	None
Coatings	None	None
Temperature Tolerances	100° C	100° C

* Long Wave = 94% at 0.35µm to 82% at 11µm

Installation and Engineering Services

Square D Services has a nationwide network of service technicians who can safely and quickly install H.VIR COMET Infrared Windows, based upon your preferences or engineering recommendations. If you have questions regarding the quantity, size(s) or placement of the H.VIR COMET infrared windows, our Power Systems Engineers can help. After an on-site visit, they will determine the optimum configuration for your facility and provide installation drawings, if needed. Complete project management is available for large-scale installations.



Infrared Inspection Services

Square D Services offers infrared inspection services carried out by skilled technicians using state-of-the-art digital infrared equipment. Ongoing maintenance inspections can be conducted free of any operational interruptions, providing the advanced notice you need of potential problems.

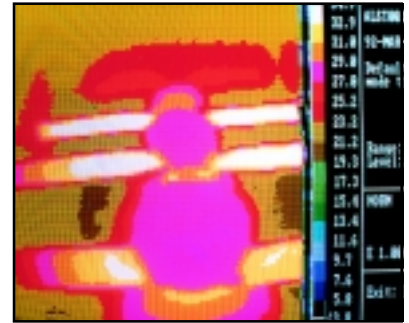
Why Choose Square D Services?

Safely locate faulty electrical components before they cost money and downtime

Engineering, installation and infrared inspection services also available

Complete project management for large-scale installations

National network of service locations and qualified experts, available 24/7



Many times, the sources of heat associated with electrical equipment can be identified through infrared scanning. Abnormal heat produced by electrical systems may indicate potential electrical problems which may be caused by:

- System overloads
- Broken or oxidized wire strands
- Loose connections
- Improper grounding Unbalanced loads
- Incorrectly adjusted equipment
- Issues with inductive heating
- High resistance terminations caused by thermal cycling

We recommend infrared scanning in conjunction with a periodic maintenance and testing program to improve your equipment's reliability. Using the H.VIR COMET infrared window may even qualify your facility for reduced insurance premiums. Check with your insurance carrier.

Industry Leading Expertise. Customized Solutions.

1-888-SQUARED

www.SquareD.com
www.SquareD-services.com
www.schneider-electric.com

**Emergency Services Available
24 Hours/Day-7 Days/Week**



© 2004 Schneider Electric
All Rights Reserved
Order Number 0180H00402